

Endocrine System

CONCEPT MAP



Pituitary

Prolactin, GH, ACTH, LH, FSH, Oxytocin and ADH

Pineal body

Melatonin



Thymus

Thymosin



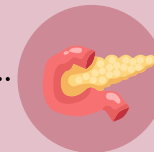
Hypothalamus

CRH, GnRH, Dopamine, GHRH, Somatostatin



Thyroid

Thyroxine, Triiodothyronine, Calcitonin



Pancreas

Insulin, glucagon, amylin



Adrenal

Epinephrine, norepinephrine, aldosterone, cortisol, and sex steroids



Gonads

Testosterone, Estrogen



Parathyroid

PTH

Non-traditional endocrine function

Heart (ANP), Skeleton (Osteocalcin), Stomach (Ghrelin), Adipose tissue (Leptin), Intestines (Gastrin, CCK, Secretin, GIP, Motilin)